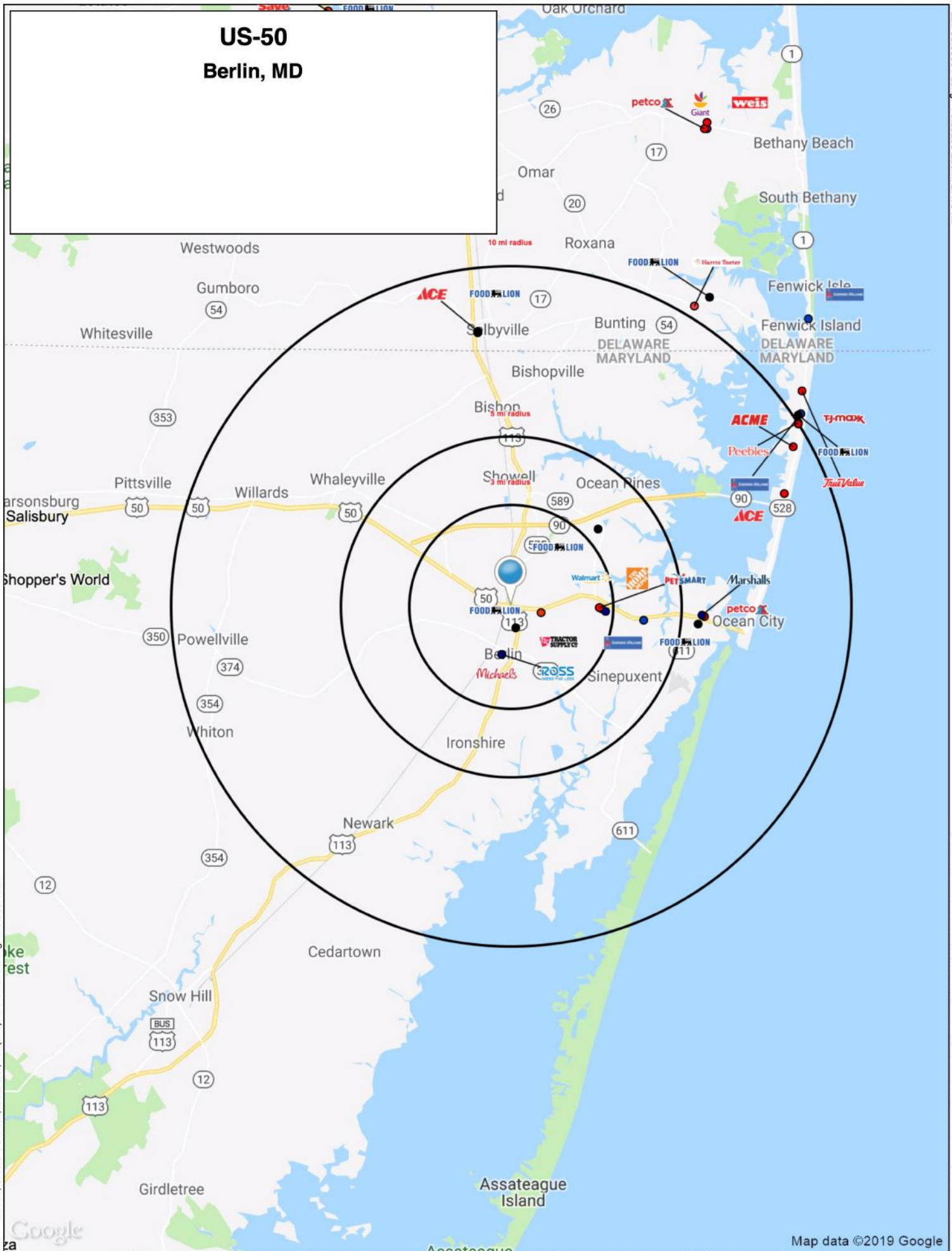
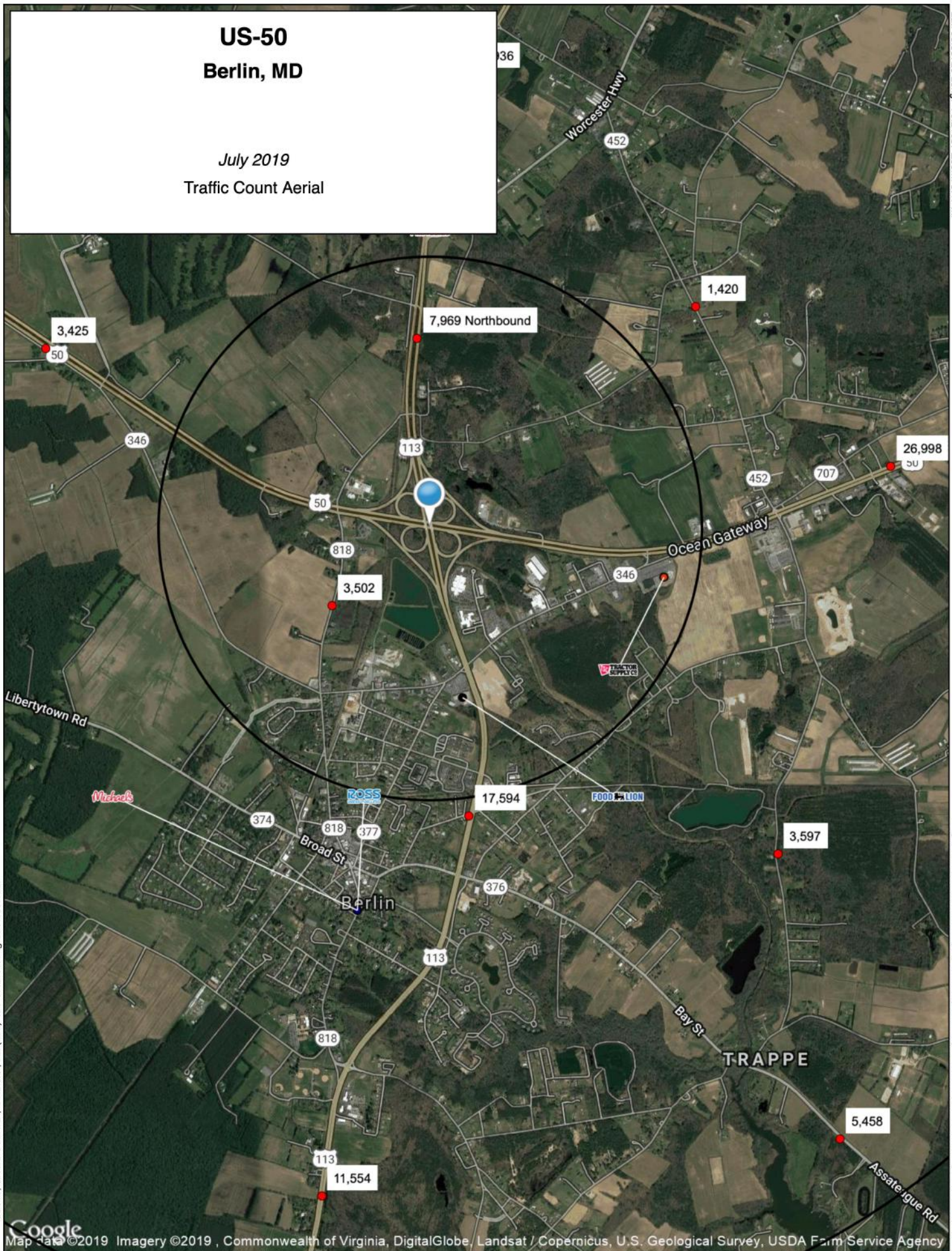


US-50 Berlin, MD



US-50 Berlin, MD

July 2019
Traffic Count Aerial



Lat: 38.33720 Long: -75.21037 Zoom: 3.47 mi

Logos are for identification purposes only and may be trademarks of their respective companies.

©2019, SITES USA Inc., Chandler, AZ (480) 491-1112. All Rights Reserved.

EXPANDED PROFILE

2000-2010 Census, 2019 Estimates with 2024 Projections

Calculated using Weighted Block Centroid from Block Groups

Lat/Lon: 38.3425/-75.2135

RF5

US-50

3 mi radius

5 mi radius

10 mi radius

Berlin, MD

Population

Estimated Population (2019)	6,946		19,798		44,105	
Projected Population (2024)	6,991		18,949		45,326	
Census Population (2010)	6,789		19,483		41,931	
Census Population (2000)	6,021		17,176		36,422	
Projected Annual Growth (2019 to 2024)	45	0.1%	-849	-0.9%	1,221	0.6%
Historical Annual Growth (2010 to 2019)	157	0.3%	315	0.2%	2,174	0.5%
Historical Annual Growth (2000 to 2010)	768	1.3%	2,307	1.3%	5,509	1.5%
Estimated Population Density (2019)	246	psm	252	psm	140	psm
Trade Area Size	28.3	sq mi	78.5	sq mi	314.0	sq mi

Households

Estimated Households (2019)	3,040		9,547		21,332	
Projected Households (2024)	2,901		8,642		21,021	
Census Households (2010)	2,626		8,319		18,039	
Census Households (2000)	2,341		7,106		15,480	
Estimated Households with Children (2019)	942	31.0%	2,025	21.2%	4,330	20.3%
Estimated Average Household Size (2019)	2.22		2.05		2.06	

Average Household Income

Estimated Average Household Income (2019)	\$70,696		\$80,704		\$77,230	
Projected Average Household Income (2024)	\$86,433		\$107,955		\$93,192	
Estimated Average Family Income (2019)	\$79,807		\$97,954		\$96,421	

Median Household Income

Estimated Median Household Income (2019)	\$57,519		\$69,452		\$67,252	
Projected Median Household Income (2024)	\$66,702		\$80,299		\$77,617	
Estimated Median Family Income (2019)	\$70,650		\$85,163		\$82,530	

Per Capita Income

Estimated Per Capita Income (2019)	\$31,060		\$38,958		\$37,383	
Projected Per Capita Income (2024)	\$35,982		\$49,276		\$43,249	
Estimated Per Capita Income 5 Year Growth	\$4,922	15.8%	\$10,318	26.5%	\$5,866	15.7%
Estimated Average Household Net Worth (2019)	\$501,245		\$588,147		\$577,118	

Daytime Demos (2019)

Total Businesses	648		1,127		3,296	
Total Employees	5,206		9,153		36,138	
Company Headquarter Businesses	4	0.6%	4	0.4%	12	0.4%
Company Headquarter Employees	231	4.4%	236	2.6%	2,075	5.7%
Employee Population per Business	8.0		8.1		11.0	
Residential Population per Business	10.7		17.6		13.4	

This report was produced using data from private and government sources deemed to be reliable. The information herein is provided without representation or warranty.

EXPANDED PROFILE

2000-2010 Census, 2019 Estimates with 2024 Projections

Calculated using Weighted Block Centroid from Block Groups

Lat/Lon: 38.3425/-75.2135

RF5

US-50

Berlin, MD

Race & Ethnicity

	3 mi radius		5 mi radius		10 mi radius	
White (2019)	4,638	66.8%	16,454	83.1%	37,632	85.3%
Black or African American (2019)	1,713	24.7%	2,216	11.2%	3,663	8.3%
American Indian or Alaska Native (2019)	31	0.4%	59	0.3%	155	0.4%
Asian (2019)	140	2.0%	310	1.6%	776	1.8%
Hawaiian or Pacific Islander (2019)	-	-	5	-	11	-
Other Race (2019)	200	2.9%	332	1.7%	1,006	2.3%
Two or More Races (2019)	224	3.2%	421	2.1%	863	2.0%
Not Hispanic or Latino Population (2019)	6,560	94.4%	19,037	96.2%	41,489	94.1%
Hispanic or Latino Population (2019)	386	5.6%	761	3.8%	2,616	5.9%
Not Hispanic or Latino Population (2024)	6,595	94.3%	18,199	96.0%	42,375	93.5%
Hispanic or Latino Population (2024)	396	5.7%	750	4.0%	2,952	6.5%
Not Hispanic or Latino Population (2010)	6,463	95.2%	18,829	96.6%	39,821	95.0%
Hispanic or Latino Population (2010)	326	4.8%	654	3.4%	2,110	5.0%
Not Hispanic or Latino Population (2000)	5,846	97.1%	16,880	98.3%	35,412	97.2%
Hispanic or Latino Population (2000)	175	2.9%	296	1.7%	1,010	2.8%
Projected Hispanic Annual Growth (2019 to 2024)	10	0.5%	-12	-0.3%	336	2.6%
Historic Hispanic Annual Growth (2000 to 2019)	210	6.3%	465	8.3%	1,606	8.4%

Age Distribution (2019)

Age Under 5	455	6.5%	911	4.6%	1,988	4.5%
Age 5 to 9 Years	447	6.4%	954	4.8%	2,101	4.8%
Age 10 to 14 Years	443	6.4%	990	5.0%	2,150	4.9%
Age 15 to 19 Years	397	5.7%	932	4.7%	2,006	4.5%
Age 20 to 24 Years	386	5.6%	870	4.4%	2,044	4.6%
Age 25 to 29 Years	480	6.9%	997	5.0%	2,349	5.3%
Age 30 to 34 Years	413	5.9%	949	4.8%	2,221	5.0%
Age 35 to 39 Years	400	5.8%	933	4.7%	2,105	4.8%
Age 40 to 44 Years	359	5.2%	862	4.4%	2,048	4.6%
Age 45 to 49 Years	394	5.7%	1,027	5.2%	2,435	5.5%
Age 50 to 54 Years	451	6.5%	1,236	6.2%	2,835	6.4%
Age 55 to 59 Years	481	6.9%	1,479	7.5%	3,405	7.7%
Age 60 to 64 Years	391	5.6%	1,644	8.3%	3,732	8.5%
Age 65 to 74 Years	689	9.9%	3,311	16.7%	7,175	16.3%
Age 75 to 84 Years	474	6.8%	1,983	10.0%	4,154	9.4%
Age 85 Years or Over	287	4.1%	719	3.6%	1,356	3.1%
Median Age	39.9		49.8		49.2	

Gender Age Distribution (2019)

Female Population	3,696	53.2%	10,371	52.4%	22,592	51.2%
Age 0 to 19 Years	842	22.8%	1,813	17.5%	3,921	17.4%
Age 20 to 64 Years	1,979	53.5%	5,246	50.6%	11,789	52.2%
Age 65 Years or Over	875	23.7%	3,312	31.9%	6,882	30.5%
Female Median Age	42.3		51.2		50.6	
Male Population	3,250	46.8%	9,428	47.6%	21,513	48.8%
Age 0 to 19 Years	899	27.7%	1,975	21.0%	4,325	20.1%
Age 20 to 64 Years	1,776	54.7%	4,751	50.4%	11,385	52.9%
Age 65 Years or Over	574	17.7%	2,702	28.7%	5,803	27.0%
Male Median Age	37.4		48.3		47.9	

This report was produced using data from private and government sources deemed to be reliable. The information herein is provided without representation or warranty.

EXPANDED PROFILE

2000-2010 Census, 2019 Estimates with 2024 Projections

Calculated using Weighted Block Centroid from Block Groups

Lat/Lon: 38.3425/-75.2135

RF5

US-50

Berlin, MD

Household Income Distribution (2019)

	3 mi radius		5 mi radius		10 mi radius	
HH Income \$200,000 or More	143	4.7%	580	6.1%	1,286	6.0%
HH Income \$150,000 to \$199,999	223	7.3%	745	7.8%	1,628	7.6%
HH Income \$100,000 to \$149,999	304	10.0%	1,559	16.3%	3,193	15.0%
HH Income \$75,000 to \$99,999	475	15.6%	1,440	15.1%	3,097	14.5%
HH Income \$50,000 to \$74,999	460	15.1%	1,767	18.5%	4,016	18.8%
HH Income \$35,000 to \$49,999	435	14.3%	1,123	11.8%	2,603	12.2%
HH Income \$25,000 to \$34,999	307	10.1%	777	8.1%	1,980	9.3%
HH Income \$15,000 to \$24,999	333	11.0%	803	8.4%	1,896	8.9%
HH Income Under \$15,000	359	11.8%	752	7.9%	1,632	7.7%
HH Income \$35,000 or More	2,041	67.1%	7,215	75.6%	15,823	74.2%
HH Income \$75,000 or More	1,146	37.7%	4,325	45.3%	9,204	43.1%

Housing (2019)

	3 mi radius		5 mi radius		10 mi radius	
Total Housing Units	3,513		13,056		43,931	
Housing Units Occupied	3,040	86.5%	9,547	73.1%	21,332	48.6%
Housing Units Owner-Occupied	1,972	64.9%	7,390	77.4%	16,398	76.9%
Housing Units, Renter-Occupied	1,068	35.1%	2,157	22.6%	4,934	23.1%
Housing Units, Vacant	473	15.5%	3,510	36.8%	22,599	105.9%

Marital Status (2019)

	3 mi radius		5 mi radius		10 mi radius	
Never Married	1,523	27.2%	3,871	22.8%	9,422	24.9%
Currently Married	2,359	42.1%	8,820	52.1%	19,152	50.6%
Separated	261	4.7%	613	3.6%	1,508	4.0%
Widowed	613	10.9%	1,521	9.0%	3,162	8.4%
Divorced	846	15.1%	2,118	12.5%	4,621	12.2%

Household Type (2019)

	3 mi radius		5 mi radius		10 mi radius	
Population Family	5,440	78.3%	15,391	77.7%	33,670	76.3%
Population Non-Family	1,319	19.0%	4,219	21.3%	10,207	23.1%
Population Group Quarters	187	2.7%	188	0.9%	228	0.5%
Family Households	1,912	62.9%	5,919	62.0%	12,745	59.7%
Non-Family Households	1,128	37.1%	3,628	38.0%	8,586	40.3%
Married Couple with Children	513	21.7%	1,220	13.8%	2,665	13.9%
Average Family Household Size	2.8		2.6		2.6	

Household Size (2019)

	3 mi radius		5 mi radius		10 mi radius	
1 Person Households	972	32.0%	3,138	32.9%	7,284	34.1%
2 Person Households	1,163	38.3%	4,358	45.7%	9,301	43.6%
3 Person Households	407	13.4%	955	10.0%	2,150	10.1%
4 Person Households	298	9.8%	666	7.0%	1,617	7.6%
5 Person Households	124	4.1%	278	2.9%	630	3.0%
6 or More Person Households	76	2.5%	151	1.6%	350	1.6%

Household Vehicles (2019)

	3 mi radius		5 mi radius		10 mi radius	
Households with 0 Vehicles Available	319	10.5%	619	6.5%	1,284	6.0%
Households with 1 Vehicles Available	952	31.3%	2,963	31.0%	6,823	32.0%
Households with 2 or More Vehicles Available	1,769	58.2%	5,965	62.5%	13,225	62.0%
Total Vehicles Available	5,313		17,345		39,130	
Average Vehicles Per Household	1.7		1.8		1.8	

This report was produced using data from private and government sources deemed to be reliable. The information herein is provided without representation or warranty.

EXPANDED PROFILE

2000-2010 Census, 2019 Estimates with 2024 Projections

Calculated using Weighted Block Centroid from Block Groups

Lat/Lon: 38.3425/-75.2135

RF5

US-50

Berlin, MD

3 mi radius 5 mi radius 10 mi radius

Labor Force (2019)

Estimated Labor Population Age 16 Years or Over	5,512		16,729		37,414	
Estimated Civilian Employed	3,315	60.1%	9,010	53.9%	20,347	54.4%
Estimated Civilian Unemployed	233	4.2%	541	3.2%	1,204	3.2%
Estimated in Armed Forces	2	-	31	0.2%	47	0.1%
Estimated Not in Labor Force	1,962	35.6%	7,146	42.7%	15,816	42.3%
Unemployment Rate	4.2%		3.2%		3.2%	

Occupation (2019)

Occupation: Population Age 16 Years or Over	3,315		9,010		20,347	
Management, Business, Financial Operations	417	12.6%	1,518	16.8%	3,451	17.0%
Professional, Related	612	18.5%	1,870	20.8%	3,761	18.5%
Service	917	27.7%	1,885	20.9%	4,515	22.2%
Sales, Office	850	25.7%	2,314	25.7%	5,178	25.4%
Farming, Fishing, Forestry	-	-	1	-	53	0.3%
Construct, Extraction, Maintenance	253	7.6%	842	9.3%	2,008	9.9%
Production, Transport Material Moving	265	8.0%	580	6.4%	1,381	6.8%
White Collar Workers	1,879	56.7%	5,702	63.3%	12,390	60.9%
Blue Collar Workers	1,436	43.3%	3,309	36.7%	7,957	39.1%

Consumer Expenditure (2019)

Total Household Expenditure	\$167.71 M		\$580.08 M		\$1.25 B	
Total Non-Retail Expenditure	\$88.69 M	52.9%	\$306.19 M	52.8%	\$662.33 M	52.8%
Total Retail Expenditure	\$79.02 M	47.1%	\$273.88 M	47.2%	\$592.05 M	47.2%
Apparel	\$5.85 M	3.5%	\$20.11 M	3.5%	\$43.48 M	3.5%
Contributions	\$5.44 M	3.2%	\$19.33 M	3.3%	\$41.69 M	3.3%
Education	\$4.84 M	2.9%	\$16.74 M	2.9%	\$36.13 M	2.9%
Entertainment	\$9.41 M	5.6%	\$32.91 M	5.7%	\$71.02 M	5.7%
Food and Beverages	\$24.76 M	14.8%	\$85.08 M	14.7%	\$184.07 M	14.7%
Furnishings and Equipment	\$5.85 M	3.5%	\$20.5 M	3.5%	\$44.21 M	3.5%
Gifts	\$4.02 M	2.4%	\$14.27 M	2.5%	\$30.75 M	2.5%
Health Care	\$14.44 M	8.6%	\$50.39 M	8.7%	\$108.93 M	8.7%
Household Operations	\$6.57 M	3.9%	\$22.92 M	4.0%	\$49.54 M	3.9%
Miscellaneous Expenses	\$3.17 M	1.9%	\$11.06 M	1.9%	\$23.9 M	1.9%
Personal Care	\$2.25 M	1.3%	\$7.81 M	1.3%	\$16.87 M	1.3%
Personal Insurance	\$1.17 M	0.7%	\$4.15 M	0.7%	\$8.92 M	0.7%
Reading	\$368.83 K	0.2%	\$1.3 M	0.2%	\$2.8 M	0.2%
Shelter	\$35.53 M	21.2%	\$121.49 M	20.9%	\$263.03 M	21.0%
Tobacco	\$1.06 M	0.6%	\$3.49 M	0.6%	\$7.63 M	0.6%
Transportation	\$30.37 M	18.1%	\$105.52 M	18.2%	\$228.08 M	18.2%
Utilities	\$12.61 M	7.5%	\$43.03 M	7.4%	\$93.35 M	7.4%

Educational Attainment (2019)

Adult Population Age 25 Years or Over	4,818		15,140		33,814	
Elementary (Grade Level 0 to 8)	159	3.3%	324	2.1%	916	2.7%
Some High School (Grade Level 9 to 11)	329	6.8%	898	5.9%	2,170	6.4%
High School Graduate	1,560	32.4%	4,143	27.4%	10,250	30.3%
Some College	933	19.4%	3,307	21.8%	7,218	21.3%
Associate Degree Only	301	6.3%	1,189	7.9%	2,590	7.7%
Bachelor Degree Only	1,010	21.0%	3,207	21.2%	6,719	19.9%
Graduate Degree	526	10.9%	2,073	13.7%	3,951	11.7%

This report was produced using data from private and government sources deemed to be reliable. The information herein is provided without representation or warranty.

EXPANDED PROFILE

2000-2010 Census, 2019 Estimates with 2024 Projections

Calculated using Weighted Block Centroid from Block Groups

Lat/Lon: 38.3425/-75.2135

RF5

US-50

Berlin, MD

Units In Structure (2019)

	3 mi radius		5 mi radius		10 mi radius	
1 Detached Unit	2,069	78.8%	7,697	92.5%	15,448	85.6%
1 Attached Unit	165	6.3%	523	6.3%	1,612	8.9%
2 to 4 Units	213	8.1%	289	3.5%	827	4.6%
5 to 9 Units	189	7.2%	274	3.3%	675	3.7%
10 to 19 Units	35	1.3%	116	1.4%	573	3.2%
20 to 49 Units	38	1.4%	81	1.0%	379	2.1%
50 or More Units	58	2.2%	114	1.4%	531	2.9%
Mobile Home or Trailer	273	10.4%	452	5.4%	1,261	7.0%
Other Structure	-	-	-	-	26	0.1%

Homes Built By Year (2019)

Homes Built 2010 or later	93	3.6%	128	1.5%	591	3.3%
Homes Built 2000 to 2009	631	24.0%	2,394	28.8%	5,294	29.3%
Homes Built 1990 to 1999	467	17.8%	2,670	32.1%	4,435	24.6%
Homes Built 1980 to 1989	511	19.4%	1,899	22.8%	4,187	23.2%
Homes Built 1970 to 1979	328	12.5%	948	11.4%	2,744	15.2%
Homes Built 1960 to 1969	325	12.4%	525	6.3%	1,421	7.9%
Homes Built 1950 to 1959	162	6.2%	264	3.2%	831	4.6%
Homes Built Before 1949	523	19.9%	717	8.6%	1,828	10.1%

Home Values (2019)

Home Values \$1,000,000 or More	2	0.1%	7	0.1%	97	0.7%
Home Values \$500,000 to \$999,999	119	7.0%	579	9.0%	1,946	13.9%
Home Values \$400,000 to \$499,999	122	7.1%	680	10.5%	1,719	12.3%
Home Values \$300,000 to \$399,999	270	15.8%	1,285	19.9%	3,073	22.0%
Home Values \$200,000 to \$299,999	687	40.2%	2,700	41.9%	4,957	35.5%
Home Values \$150,000 to \$199,999	359	21.0%	1,156	17.9%	2,223	15.9%
Home Values \$100,000 to \$149,999	167	9.8%	392	6.1%	884	6.3%
Home Values \$70,000 to \$99,999	79	4.6%	141	2.2%	407	2.9%
Home Values \$50,000 to \$69,999	8	0.5%	39	0.6%	197	1.4%
Home Values \$25,000 to \$49,999	49	2.8%	138	2.1%	267	1.9%
Home Values Under \$25,000	94	5.5%	192	3.0%	420	3.0%
Owner-Occupied Median Home Value	\$226,107		\$260,913		\$278,320	
Renter-Occupied Median Rent	\$816		\$908		\$840	

Transportation To Work (2019)

Drive to Work Alone	2,440	76.6%	7,409	82.4%	16,300	80.8%
Drive to Work in Carpool	307	9.6%	590	6.6%	1,380	6.8%
Travel to Work by Public Transportation	73	2.3%	107	1.2%	430	2.1%
Drive to Work on Motorcycle	3	0.1%	5	-	24	0.1%
Walk or Bicycle to Work	54	1.7%	108	1.2%	579	2.9%
Other Means	66	2.1%	84	0.9%	129	0.6%
Work at Home	243	7.6%	685	7.6%	1,331	6.6%

Travel Time (2019)

Travel to Work in 14 Minutes or Less	864	27.1%	2,497	27.8%	6,117	30.3%
Travel to Work in 15 to 29 Minutes	1,075	33.7%	3,283	36.5%	7,296	36.2%
Travel to Work in 30 to 59 Minutes	873	27.4%	1,989	22.1%	4,389	21.8%
Travel to Work in 60 Minutes or More	247	7.8%	549	6.1%	1,217	6.0%
Average Minutes Travel to Work	22.3		19.4		18.9	

This report was produced using data from private and government sources deemed to be reliable. The information herein is provided without representation or warranty.