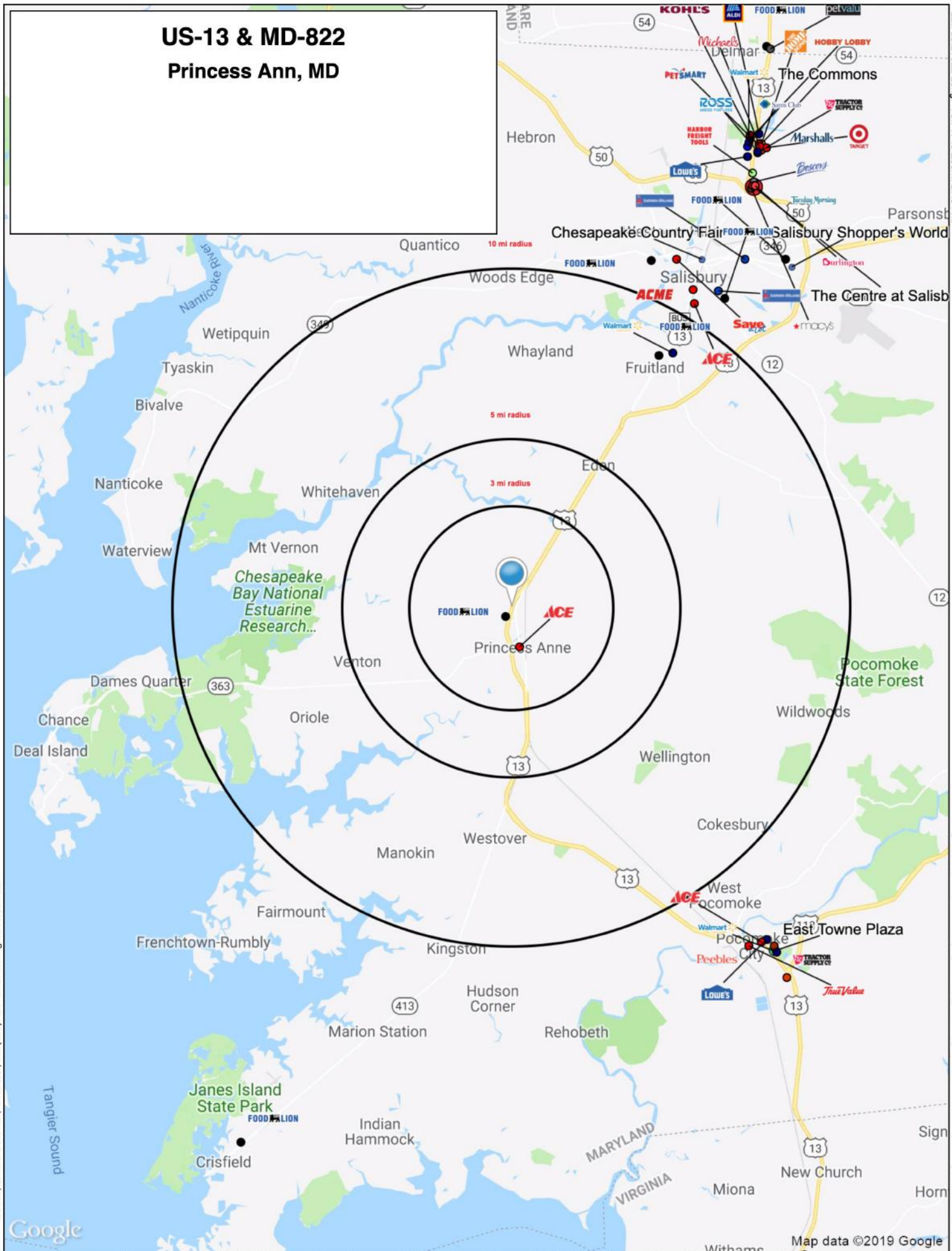


US-13 & MD-822 Princess Anne, MD



Lat: 38.21022 Long: -75.71749 Zoom: 27.84 mi

Logos are for identification purposes only and may be trademarks of their respective companies.

©2019, SITES USA Inc., Chandler, AZ (480) 491-1112. All Rights Reserved.

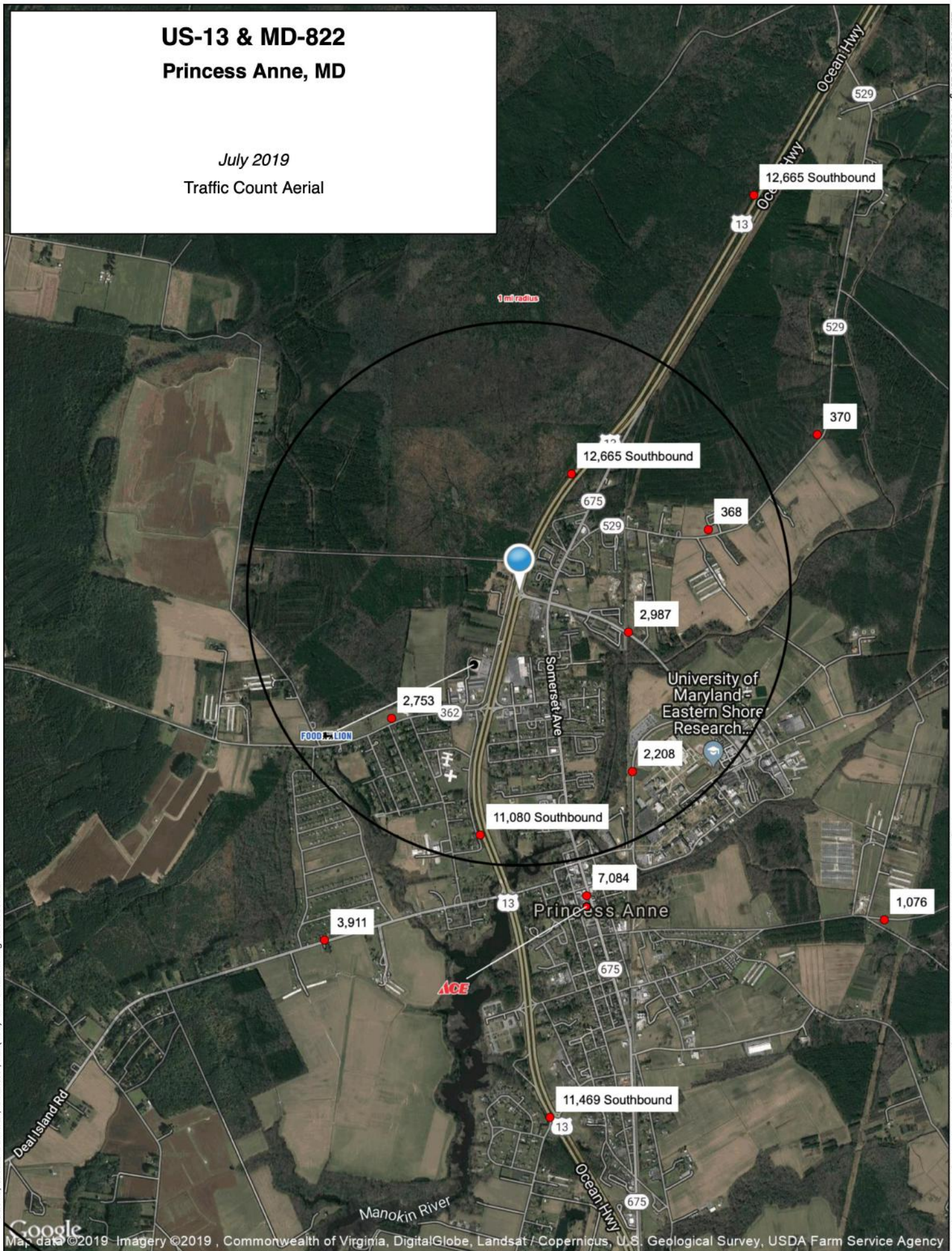
Google

This map was produced using data from private and government sources deemed to be reliable. The information herein is provided without representation or warranty

Map data ©2019 Google

US-13 & MD-822 Princess Anne, MD

July 2019
Traffic Count Aerial



Lat: 38.21789 Long: -75.70087 Zoom: 3.48 mi

Logos are for identification purposes only and may be trademarks of their respective companies.

©2019, SITES USA Inc., Chandler, AZ (480) 491-1112. All Rights Reserved.

Google Map, data ©2019 Imagery ©2019, Commonwealth of Virginia, DigitalGlobe, Landsat / Copernicus, U.S. Geological Survey, USDA Farm Service Agency

This map was produced using data from private and government sources deemed to be reliable. The information herein is provided without representation or warranty

EXPANDED PROFILE

2000-2010 Census, 2019 Estimates with 2024 Projections

Calculated using Weighted Block Centroid from Block Groups

Lat/Lon: 38.2197/-75.6979

RF5

US-13 & MD-822

	3 mi radius		5 mi radius		10 mi radius	
Population						
Estimated Population (2019)	8,465		13,902		41,748	
Projected Population (2024)	8,270		13,673		41,952	
Census Population (2010)	8,292		14,116		40,608	
Census Population (2000)	6,385		10,755		31,858	
Projected Annual Growth (2019 to 2024)	-195	-0.5%	-229	-0.3%	204	-
Historical Annual Growth (2010 to 2019)	173	0.2%	-214	-0.2%	1,140	0.3%
Historical Annual Growth (2000 to 2010)	1,907	3.0%	3,361	3.1%	8,749	2.7%
Estimated Population Density (2019)	300 psm		177 psm		133 psm	
Trade Area Size	28.3 sq mi		78.5 sq mi		314.0 sq mi	
Households						
Estimated Households (2019)	3,105		4,128		14,258	
Projected Households (2024)	2,981		3,976		14,290	
Census Households (2010)	2,793		3,773		13,121	
Census Households (2000)	2,223		3,225		10,673	
Estimated Households with Children (2019)	756	24.3%	1,021	24.7%	3,847	27.0%
Estimated Average Household Size (2019)	2.17		2.18		2.38	
Average Household Income						
Estimated Average Household Income (2019)	\$43,982		\$52,973		\$87,981	
Projected Average Household Income (2024)	\$55,030		\$67,315		\$107,344	
Estimated Average Family Income (2019)	\$63,589		\$75,633		\$118,841	
Median Household Income						
Estimated Median Household Income (2019)	\$35,255		\$41,645		\$65,357	
Projected Median Household Income (2024)	\$40,480		\$47,863		\$76,439	
Estimated Median Family Income (2019)	\$50,547		\$60,435		\$90,326	
Per Capita Income						
Estimated Per Capita Income (2019)	\$16,859		\$19,471		\$31,589	
Projected Per Capita Income (2024)	\$20,578		\$23,377		\$38,097	
Estimated Per Capita Income 5 Year Growth	\$3,719	22.1%	\$3,906	20.1%	\$6,508	20.6%
Estimated Average Household Net Worth (2019)	\$200,422		\$261,464		\$585,644	
Daytime Demos (2019)						
Total Businesses	343		373		1,082	
Total Employees	3,611		4,827		10,823	
Company Headquarter Businesses	1	0.3%	1	0.3%	6	0.6%
Company Headquarter Employees	6	0.2%	6	0.1%	119	1.1%
Employee Population per Business	10.5		12.9		10.0	
Residential Population per Business	24.7		37.2		38.6	

This report was produced using data from private and government sources deemed to be reliable. The information herein is provided without representation or warranty.

EXPANDED PROFILE

2000-2010 Census, 2019 Estimates with 2024 Projections

Calculated using Weighted Block Centroid from Block Groups

Lat/Lon: 38.2197/-75.6979

RF5

US-13 & MD-822

	3 mi radius		5 mi radius		10 mi radius	
Race & Ethnicity						
White (2019)	2,741	32.4%	5,033	36.2%	25,331	60.7%
Black or African American (2019)	5,175	61.1%	8,175	58.8%	13,389	32.1%
American Indian or Alaska Native (2019)	23	0.3%	34	0.2%	117	0.3%
Asian (2019)	137	1.6%	165	1.2%	1,395	3.3%
Hawaiian or Pacific Islander (2019)	6	-	6	-	8	-
Other Race (2019)	155	1.8%	187	1.3%	498	1.2%
Two or More Races (2019)	227	2.7%	301	2.2%	1,009	2.4%
Not Hispanic or Latino Population (2019)	8,105	95.7%	13,439	96.7%	40,265	96.4%
Hispanic or Latino Population (2019)	360	4.3%	463	3.3%	1,483	3.6%
Not Hispanic or Latino Population (2024)	7,919	95.8%	13,219	96.7%	40,447	96.4%
Hispanic or Latino Population (2024)	351	4.2%	454	3.3%	1,505	3.6%
Not Hispanic or Latino Population (2010)	7,940	95.8%	13,675	96.9%	39,438	97.1%
Hispanic or Latino Population (2010)	352	4.2%	441	3.1%	1,170	2.9%
Not Hispanic or Latino Population (2000)	6,292	98.5%	10,627	98.8%	31,463	98.8%
Hispanic or Latino Population (2000)	93	1.5%	127	1.2%	395	1.2%
Projected Hispanic Annual Growth (2019 to 2024)	-9	-0.5%	-9	-0.4%	22	0.3%
Historic Hispanic Annual Growth (2000 to 2019)	266	15.0%	336	13.9%	1,088	14.5%
Age Distribution (2019)						
Age Under 5	457	5.4%	591	4.2%	1,925	4.6%
Age 5 to 9 Years	455	5.4%	566	4.1%	2,001	4.8%
Age 10 to 14 Years	415	4.9%	543	3.9%	2,127	5.1%
Age 15 to 19 Years	971	11.5%	1,400	10.1%	4,787	11.5%
Age 20 to 24 Years	1,504	17.8%	2,300	16.5%	5,106	12.2%
Age 25 to 29 Years	818	9.7%	1,354	9.7%	3,121	7.5%
Age 30 to 34 Years	553	6.5%	1,034	7.4%	2,361	5.7%
Age 35 to 39 Years	435	5.1%	878	6.3%	2,287	5.5%
Age 40 to 44 Years	337	4.0%	800	5.8%	2,133	5.1%
Age 45 to 49 Years	362	4.3%	783	5.6%	2,290	5.5%
Age 50 to 54 Years	380	4.5%	729	5.2%	2,383	5.7%
Age 55 to 59 Years	428	5.1%	738	5.3%	2,671	6.4%
Age 60 to 64 Years	375	4.4%	635	4.6%	2,436	5.8%
Age 65 to 74 Years	559	6.6%	893	6.4%	3,559	8.5%
Age 75 to 84 Years	275	3.2%	432	3.1%	1,812	4.3%
Age 85 Years or Over	142	1.7%	225	1.6%	747	1.8%
Median Age	28.9		32.1		34.9	
Gender Age Distribution (2019)						
Female Population	4,468	52.8%	5,929	42.6%	20,349	48.7%
Age 0 to 19 Years	1,252	28.0%	1,588	26.8%	5,661	27.8%
Age 20 to 64 Years	2,674	59.8%	3,509	59.2%	11,313	55.6%
Age 65 Years or Over	542	12.1%	831	14.0%	3,376	16.6%
Female Median Age	28.8		31.5		35.3	
Male Population	3,997	47.2%	7,973	57.4%	21,399	51.3%
Age 0 to 19 Years	1,047	26.2%	1,513	19.0%	5,179	24.2%
Age 20 to 64 Years	2,517	63.0%	5,742	72.0%	13,476	63.0%
Age 65 Years or Over	433	10.8%	718	9.0%	2,743	12.8%
Male Median Age	29.1		32.5		34.5	

This report was produced using data from private and government sources deemed to be reliable. The information herein is provided without representation or warranty.

EXPANDED PROFILE

2000-2010 Census, 2019 Estimates with 2024 Projections

Calculated using Weighted Block Centroid from Block Groups

Lat/Lon: 38.2197/-75.6979

RF5

US-13 & MD-822

	3 mi radius		5 mi radius		10 mi radius	
Household Income Distribution (2019)						
HH Income \$200,000 or More	3	0.1%	44	1.1%	947	6.6%
HH Income \$150,000 to \$199,999	56	1.8%	107	2.6%	1,020	7.2%
HH Income \$100,000 to \$149,999	229	7.4%	381	9.2%	1,871	13.1%
HH Income \$75,000 to \$99,999	443	14.3%	597	14.5%	2,166	15.2%
HH Income \$50,000 to \$74,999	469	15.1%	656	15.9%	2,322	16.3%
HH Income \$35,000 to \$49,999	345	11.1%	465	11.3%	1,786	12.5%
HH Income \$25,000 to \$34,999	296	9.5%	404	9.8%	1,161	8.1%
HH Income \$15,000 to \$24,999	355	11.4%	463	11.2%	1,318	9.2%
HH Income Under \$15,000	910	29.3%	1,010	24.5%	1,667	11.7%
HH Income \$35,000 or More	1,545	49.8%	2,250	54.5%	10,112	70.9%
HH Income \$75,000 or More	731	23.5%	1,129	27.3%	6,004	42.1%
Housing (2019)						
Total Housing Units	3,475		4,647		15,550	
Housing Units Occupied	3,105	89.4%	4,128	88.8%	14,258	91.7%
Housing Units Owner-Occupied	1,264	40.7%	2,090	50.6%	9,617	67.5%
Housing Units, Renter-Occupied	1,841	59.3%	2,038	49.4%	4,641	32.5%
Housing Units, Vacant	370	11.9%	519	12.6%	1,292	9.1%
Marital Status (2019)						
Never Married	4,078	57.1%	7,030	57.6%	17,216	48.2%
Currently Married	1,561	21.9%	2,378	19.5%	11,555	32.4%
Separated	409	5.7%	930	7.6%	1,815	5.1%
Widowed	383	5.4%	553	4.5%	1,710	4.8%
Divorced	707	9.9%	1,310	10.7%	3,400	9.5%
Household Type (2019)						
Population Family	4,669	55.2%	6,505	46.8%	26,143	62.6%
Population Non-Family	2,055	24.3%	2,481	17.8%	7,830	18.8%
Population Group Quarters	1,741	20.6%	4,917	35.4%	7,774	18.6%
Family Households	1,522	49.0%	2,188	53.0%	8,852	62.1%
Non-Family Households	1,584	51.0%	1,940	47.0%	5,406	37.9%
Married Couple with Children	327	20.9%	492	20.7%	2,458	21.3%
Average Family Household Size	3.1		3.0		3.0	
Household Size (2019)						
1 Person Households	1,300	41.9%	1,605	38.9%	4,029	28.3%
2 Person Households	911	29.3%	1,327	32.1%	5,109	35.8%
3 Person Households	424	13.7%	573	13.9%	2,237	15.7%
4 Person Households	261	8.4%	355	8.6%	1,858	13.0%
5 Person Households	114	3.7%	152	3.7%	627	4.4%
6 or More Person Households	94	3.0%	116	2.8%	398	2.8%
Household Vehicles (2019)						
Households with 0 Vehicles Available	438	14.1%	481	11.6%	891	6.2%
Households with 1 Vehicles Available	1,589	51.2%	1,908	46.2%	4,461	31.3%
Households with 2 or More Vehicles Available	1,078	34.7%	1,739	42.1%	8,906	62.5%
Total Vehicles Available	4,285		6,268		27,644	
Average Vehicles Per Household	1.4		1.5		1.9	

This report was produced using data from private and government sources deemed to be reliable. The information herein is provided without representation or warranty.

EXPANDED PROFILE

2000-2010 Census, 2019 Estimates with 2024 Projections

Calculated using Weighted Block Centroid from Block Groups

Lat/Lon: 38.2197/-75.6979

RF5

US-13 & MD-822

	3 mi radius		5 mi radius		10 mi radius	
Labor Force (2019)						
Estimated Labor Population Age 16 Years or Over	7,121		12,165		35,460	
Estimated Civilian Employed	3,024	42.5%	4,077	33.5%	17,337	48.9%
Estimated Civilian Unemployed	365	5.1%	423	3.5%	1,047	3.0%
Estimated in Armed Forces	-	-	-	-	17	-
Estimated Not in Labor Force	3,732	52.4%	7,665	63.0%	17,060	48.1%
Unemployment Rate	5.1%		3.5%		3.0%	
Occupation (2019)						
Occupation: Population Age 16 Years or Over	3,024		4,077		17,337	
Management, Business, Financial Operations	303	10.0%	407	10.0%	2,290	13.2%
Professional, Related	561	18.5%	779	19.1%	4,374	25.2%
Service	1,017	33.6%	1,292	31.7%	3,953	22.8%
Sales, Office	605	20.0%	842	20.6%	3,466	20.0%
Farming, Fishing, Forestry	56	1.9%	79	1.9%	313	1.8%
Construct, Extraction, Maintenance	184	6.1%	291	7.1%	1,054	6.1%
Production, Transport Material Moving	298	9.9%	388	9.5%	1,886	10.9%
White Collar Workers	1,469	48.6%	2,027	49.7%	10,130	58.4%
Blue Collar Workers	1,555	51.4%	2,049	50.3%	7,207	41.6%
Consumer Expenditure (2019)						
Total Household Expenditure	\$124.64 M		\$185.53 M		\$904.11 M	
Total Non-Retail Expenditure	\$66.02 M	53.0%	\$98.07 M	52.9%	\$477.65 M	52.8%
Total Retail Expenditure	\$58.63 M	47.0%	\$87.46 M	47.1%	\$426.46 M	47.2%
Apparel	\$4.33 M	3.5%	\$6.44 M	3.5%	\$31.84 M	3.5%
Contributions	\$3.7 M	3.0%	\$5.67 M	3.1%	\$29.79 M	3.3%
Education	\$3.48 M	2.8%	\$5.19 M	2.8%	\$27.5 M	3.0%
Entertainment	\$6.74 M	5.4%	\$10.16 M	5.5%	\$51.27 M	5.7%
Food and Beverages	\$18.83 M	15.1%	\$27.82 M	15.0%	\$132.89 M	14.7%
Furnishings and Equipment	\$4.2 M	3.4%	\$6.33 M	3.4%	\$31.85 M	3.5%
Gifts	\$2.76 M	2.2%	\$4.21 M	2.3%	\$22.39 M	2.5%
Health Care	\$10.74 M	8.6%	\$16.03 M	8.6%	\$76.6 M	8.5%
Household Operations	\$4.75 M	3.8%	\$7.13 M	3.8%	\$35.59 M	3.9%
Miscellaneous Expenses	\$2.32 M	1.9%	\$3.48 M	1.9%	\$17.12 M	1.9%
Personal Care	\$1.67 M	1.3%	\$2.49 M	1.3%	\$12.13 M	1.3%
Personal Insurance	\$773.53 K	0.6%	\$1.2 M	0.6%	\$6.44 M	0.7%
Reading	\$266.58 K	0.2%	\$400.43 K	0.2%	\$1.98 M	0.2%
Shelter	\$26.97 M	21.6%	\$39.73 M	21.4%	\$190.42 M	21.1%
Tobacco	\$920.44 K	0.7%	\$1.31 M	0.7%	\$5.44 M	0.6%
Transportation	\$22.35 M	17.9%	\$33.49 M	18.1%	\$164.37 M	18.2%
Utilities	\$9.85 M	7.9%	\$14.45 M	7.8%	\$66.52 M	7.4%
Educational Attainment (2019)						
Adult Population Age 25 Years or Over	4,662		8,501		25,801	
Elementary (Grade Level 0 to 8)	214	4.6%	436	5.1%	810	3.1%
Some High School (Grade Level 9 to 11)	507	10.9%	1,022	12.0%	2,109	8.2%
High School Graduate	1,594	34.2%	3,452	40.6%	8,431	32.7%
Some College	1,127	24.2%	1,882	22.1%	5,410	21.0%
Associate Degree Only	345	7.4%	496	5.8%	1,703	6.6%
Bachelor Degree Only	577	12.4%	756	8.9%	4,046	15.7%
Graduate Degree	299	6.4%	456	5.4%	3,291	12.8%

This report was produced using data from private and government sources deemed to be reliable. The information herein is provided without representation or warranty.

EXPANDED PROFILE

2000-2010 Census, 2019 Estimates with 2024 Projections

Calculated using Weighted Block Centroid from Block Groups

Lat/Lon: 38.2197/-75.6979

RF5

US-13 & MD-822

	3 mi radius		5 mi radius		10 mi radius	
Units In Structure (2019)						
1 Detached Unit	1,443	51.7%	2,210	58.6%	10,306	78.5%
1 Attached Unit	256	9.2%	274	7.3%	653	5.0%
2 to 4 Units	362	12.9%	373	9.9%	672	5.1%
5 to 9 Units	311	11.1%	328	8.7%	480	3.7%
10 to 19 Units	388	13.9%	412	10.9%	765	5.8%
20 to 49 Units	34	1.2%	38	1.0%	317	2.4%
50 or More Units	29	1.0%	30	0.8%	153	1.2%
Mobile Home or Trailer	283	10.1%	464	12.3%	910	6.9%
Other Structure	-	-	-	-	4	-
Homes Built By Year (2019)						
Homes Built 2010 or later	236	8.4%	284	7.5%	1,082	8.2%
Homes Built 2000 to 2009	540	19.3%	784	20.8%	2,718	20.7%
Homes Built 1990 to 1999	635	22.7%	790	20.9%	2,412	18.4%
Homes Built 1980 to 1989	405	14.5%	571	15.1%	2,499	19.0%
Homes Built 1970 to 1979	450	16.1%	560	14.8%	1,952	14.9%
Homes Built 1960 to 1969	183	6.5%	268	7.1%	1,092	8.3%
Homes Built 1950 to 1959	132	4.7%	210	5.6%	982	7.5%
Homes Built Before 1949	525	18.8%	662	17.5%	1,521	11.6%
Home Values (2019)						
Home Values \$1,000,000 or More	2	0.1%	3	0.1%	52	0.6%
Home Values \$500,000 to \$999,999	35	3.0%	82	4.2%	557	6.2%
Home Values \$400,000 to \$499,999	25	2.2%	60	3.1%	371	4.1%
Home Values \$300,000 to \$399,999	144	12.2%	207	10.6%	885	9.8%
Home Values \$200,000 to \$299,999	129	10.9%	245	12.6%	2,401	26.6%
Home Values \$150,000 to \$199,999	252	21.4%	399	20.4%	2,161	24.0%
Home Values \$100,000 to \$149,999	318	27.0%	506	25.9%	1,593	17.7%
Home Values \$70,000 to \$99,999	107	9.1%	178	9.1%	696	7.7%
Home Values \$50,000 to \$69,999	98	8.3%	127	6.5%	311	3.4%
Home Values \$25,000 to \$49,999	53	4.5%	103	5.2%	242	2.7%
Home Values Under \$25,000	100	8.5%	178	9.1%	328	3.6%
Owner-Occupied Median Home Value	\$141,696		\$149,097		\$192,043	
Renter-Occupied Median Rent	\$588		\$588		\$686	
Transportation To Work (2019)						
Drive to Work Alone	2,324	82.6%	3,786	82.8%	14,887	83.2%
Drive to Work in Carpool	162	5.8%	303	6.6%	1,264	7.1%
Travel to Work by Public Transportation	18	0.6%	22	0.5%	81	0.5%
Drive to Work on Motorcycle	-	-	-	-	6	-
Walk or Bicycle to Work	181	6.4%	218	4.8%	792	4.4%
Other Means	12	0.4%	23	0.5%	99	0.6%
Work at Home	117	4.2%	222	4.9%	758	4.2%
Travel Time (2019)						
Travel to Work in 14 Minutes or Less	1,030	36.6%	1,333	29.1%	6,348	35.5%
Travel to Work in 15 to 29 Minutes	1,297	46.1%	1,671	36.5%	6,413	35.9%
Travel to Work in 30 to 59 Minutes	513	18.2%	760	16.6%	3,114	17.4%
Travel to Work in 60 Minutes or More	57	2.0%	124	2.7%	726	4.1%
Average Minutes Travel to Work	18.4		21.5		17.6	

This report was produced using data from private and government sources deemed to be reliable. The information herein is provided without representation or warranty.